



PAI-2 Polyclonal Antibody

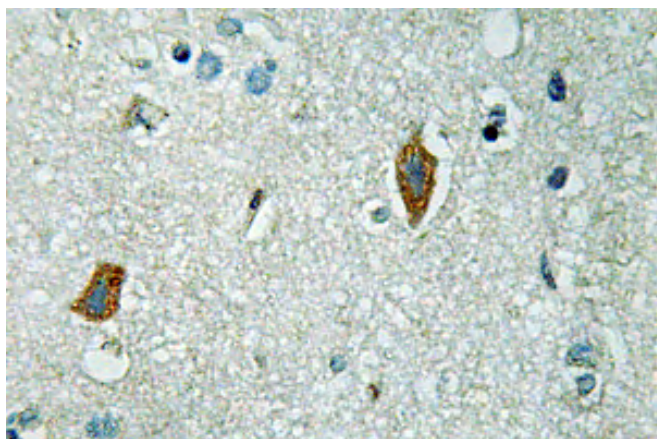
Catalog No	YP-Ab-04058
Isotype	IgG
Reactivity	Human;Rat;Mouse;
Applications	WB;IHC;IF;ELISA
Gene Name	SERPINB2
Protein Name	Plasminogen activator inhibitor 2
Immunogen	The antiserum was produced against synthesized peptide derived from human PAI-2. AA range:258-307
Specificity	PAI-2 Polyclonal Antibody detects endogenous levels of PAI-2 protein.
Formulation	Liquid in PBS containing 50% glycerol, 0.5% BSA and 0.02% sodium azide.
Source	Polyclonal, Rabbit,IgG
Purification	The antibody was affinity-purified from rabbit antiserum by affinity-chromatography using epitope-specific immunogen.
Dilution	WB: 1/500 - 1/2000. IHC: 1/100 - 1/300. ELISA: 1/40000.. IF 1:50-200
Concentration	1 mg/ml
Purity	≥90%
Storage Stability	-20°C/1 year
Synonyms	SERPINB2; PAI2; PLANH2; Plasminogen activator inhibitor 2; PAI-2; Monocyte Arg-serpin; Placental plasminogen activator inhibitor; Serpin B2; Urokinase inhibitor
Observed Band	46kD
Cell Pathway	Cytoplasm. Secreted, extracellular space.
Tissue Specificity	Brain,Monocyte,Placenta,
Function	function:Inhibits urokinase-type plasminogen activator. The monocyte derived PAI-2 is distinct from the endothelial cell-derived PAI-1.,PTM:The signal sequence is not cleaved.,similarity:Belongs to the serpin family. Ov-serpin subfamily.,
Background	function:Inhibits urokinase-type plasminogen activator. The monocyte derived PAI-2 is distinct from the endothelial cell-derived PAI-1.,PTM:The signal sequence is not cleaved.,similarity:Belongs to the serpin family. Ov-serpin subfamily.,
matters needing attention	Avoid repeated freezing and thawing!



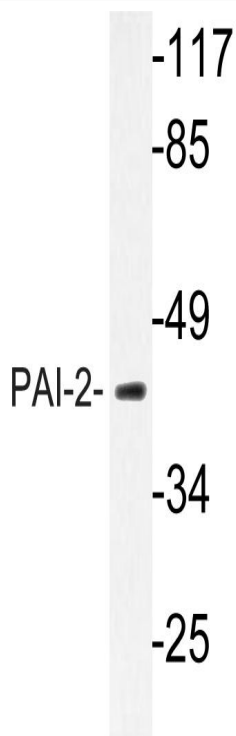
Usage suggestions

This product can be used in immunological reaction related experiments. For more information, please consult technical personnel.

Products Images



Immunohistochemistry analysis of PAI-2 antibody in paraffin-embedded human brain tissue.



Western blot analysis of lysate from MCF-7 cells, using PAI-2 antibody.